

Useful Dates



Spring Term 1

Animals



Spring 1

6.1.25 - School re-opens

14.2.25 - School closes for half term

Welcome to the Early Years ~ Turquoise Room

Welcome back and happy new year! We hope that you have all had a lovely Christmas with your families and are looking forward to another exciting term in nursery. We would like to also extend our welcome to our new families who have joined us this term. We are also welcoming Miss Sutton to our Turquoise room team.

During the first half term we will be learning all about animals starting with animals that live in the snow. We will then learn about the zoo and the farm. Each week, we have a key story that will inspire our activities that we run alongside the children's interests.

We will also be focusing on calendar celebrations and celebrating them together with our peers. These will include New Year, Valentines Day, Chinese New Year and Easter. The children will have a simple introduction to these traditions for celebrating these events.

Our PSED focus is friendships. The staff are enjoying getting to know our new children and are interacting alongside play.

Things to work on at home:

- Can I help to put on my coat and shoes
- Can I eat independently using a fork or spoon
- Can I wash my hands independently or with help.

If you have any questions, please do not hesitate to email eyfs@wes.rklt.co.uk or speak to your nursery teachers.

Miss Thompson, Mrs Voakes, Miss Winter and Miss Sutton

Western Curriculum Drivers

Use of Technology



The Natural World



Diversity



Values Health and Well-being



Useful Dates



Spring 2

24.2.25 - School re-opens

7.3.25 - World Book Day
(Whole School)

20.3.23- Nursery Easter Fun
Day at school (For children
attending this day)

4.4.25 - Early Years Easter
Bonnet Parade (We will
record for Tapestry)

4.4.25 - School Closes at
2.30p.m. **Polite reminder**
there is no After School Care
on this day. Breakfast Club
will run as usual.

Spring Term 2 Stories We Love

Our Learning

This half term, we will be reading some traditional tales which we will inform our learning in all areas of development. We have exciting plans for role play as well as creative, small world and sensory play. Each week we will choose a different story and read it with the children accompanied with a story sack. We will also have a small world tray set up where they can play with the characters from our stories, make up their own stories or have a go at retelling the story.

As always, we will continue to follow the children's interests and will update Tapestry to share your child's learning experiences with you at home.

Things to work on at home:

- Can I use a fork independently
- Can I wash my hands independently / with help
- Can I use the potty / toilet independently or with help

If you have any questions, please do not hesitate to email eyfs@wes.rklt.co.uk

Miss Thompson, Mrs Voakes, Miss Winter and Miss Sutton

Western
Curriculum
Drivers

Use of Technology



The Natural World



Diversity



Values
Health and Well-being



Our Staff



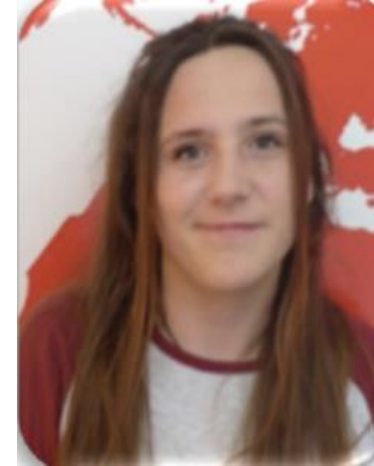
Miss Thompson
Turquoise Room
Leader



Mrs Voakes
HLTA/GTA



Miss Winter
GTA



Miss Sutton
GTA