



KS1 Philosophy

Bridging the gap between play-based learning and formal teaching

"Child development is like a dance, not like climbing a ladder."

Collaborative Vision

We build on our whole-school vision by aiming to:

- develop well-rounded and responsible individuals
- facilitate opportunity for child-led questioning
- provide building blocks to support children in their readiness for formal learning, based on individual need
- support continued independence and collaboration

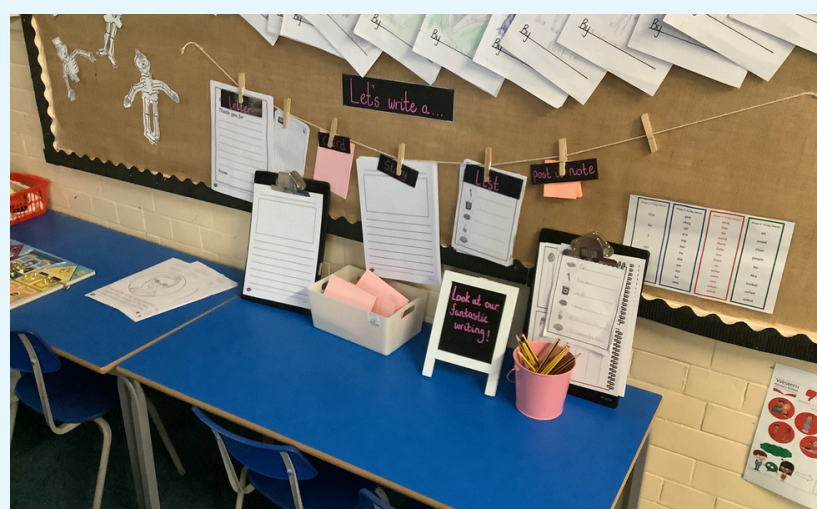
Enhanced Provision



Research-based

As a means to build on the foundations from EYFS, continuous and enhanced provision provides children the opportunity to work on their self-regulation, managing self and building relationships.

Continuous Provision

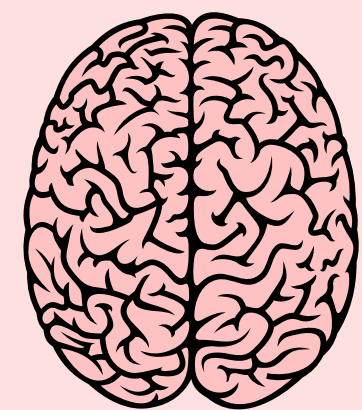


Timetable

Children in Y1 are given the opportunity to "explore" in their classroom.

Individual Need

We consider the cohort of children and their individual needs, ensuring learning is tailored to promote success,



Themes

Autumn term in Y1 begins with child-led curriculum drivers.

Staff

Our team of experienced teachers are all trained in EYFS principles and engage in CPD relating to early development.

PSED

The pre-operational stage runs from 2 - 6 years old and is the period during which children are highly active, learning through pretend play and first-hand experiences.